

**Norton Space & Aeronautics Academy:  
A Language and Science Academy**

503 E. Central Ave.  
San Bernardino, CA 92408  
909-386-2300 Fax: 909-386-7855  
ggirard@lcer.org  
<http://www.lewiscenter.org/nsaa>



---

**¡Padres y pan dulce!  
EL JUEVES 28 DE Enero**

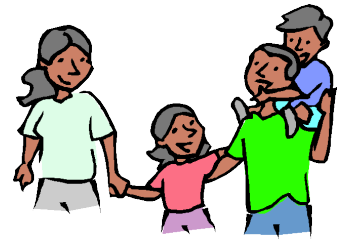
Queremos invitarles a nuestra junta de “Padres y pan dulce” este jueves 28 de enero. En esta junta compartiremos información importante acerca de nuestra escuela. Si tienen preguntas para esta junta, por favor busquen las tarjetas para preguntas en la mesa de atrás.



**HORA: 8:30 a.m. – 9:30 a.m.**

**LUGAR: Cafetería**

**¡LES ESPERAMOS!**



**Norton Space & Aeronautics Academy:  
A Language and Science Academy**

503 E. Central Ave.  
San Bernardino, CA 92408  
909-386-2300 Fax: 909-386-7855  
ggirard@lcer.org  
<http://www.lewiscenter.org/nsaa>



---

**¡Padres y pan dulce!  
EL JUEVES 28 DE Enero**

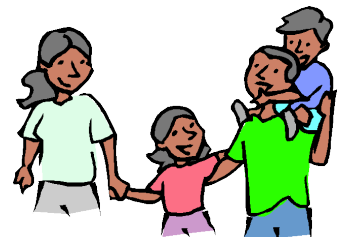
Queremos invitarles a nuestra junta de “Padres y pan dulce” este jueves 28 de enero. En esta junta compartiremos información importante acerca de nuestra escuela. Si tienen preguntas para esta junta, por favor busquen las tarjetas para preguntas en la mesa de atrás.



**HORA: 8:30 a.m. – 9:30 a.m.**

**LUGAR: Cafetería**

**¡LES ESPERAMOS!**



***Norton Space & Aeronautics Academy:  
A Language and Science Academy***

503 E. Central Ave.  
San Bernardino, CA 92408  
909-386-2300 Fax: 909-386-7855  
ggirard@lcer.org  
<http://www.lewiscenter.org/nsaa>



---

# Parents and Pastries!

**THURSDAY January 28th**

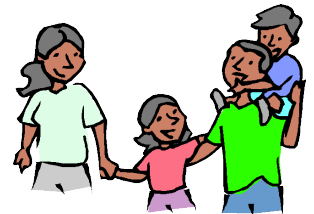
We would like to invite you to a Parent and Pastries this Thursday January 28th. At this meeting we will be sharing with you important information about our school. If you have questions for this meeting, please look for the question cards available at the back table.



**TIME: 8:30 a.m. - 9:30 a.m.**

**PLACE: Cafeteria**

**WE LOOK FORWARD TO SEEING YOU!**



---

***Norton Space & Aeronautics Academy:  
A Language and Science Academy***

503 E. Central Ave.  
San Bernardino, CA 92408  
909-386-2300 Fax: 909-386-7855  
ggirard@lcer.org  
<http://www.lewiscenter.org/nsaa>



---

# Parents and Pastries!

**THURSDAY January 28th**

We would like to invite you to a Parent and Pastries this Thursday January 28th. At this meeting we will be sharing with you important information about our school. If you have questions for this meeting, please look for the question cards available at the back table.



**TIME: 8:30 a.m. - 9:30 a.m.**

**PLACE: Cafeteria**

**WE LOOK FORWARD TO SEEING YOU!**

